



NTPL/POL

SANTA'S WORKSHOP INTL

JEPPESEN

12-25

25 DEC 13

24 Dec 2013

NORTH POLE VILLAGE

RNAV (GPS) Rwy 18

ARCTIC Center

NORTH POLE Approach

WORKSHOP Traffic

122.8

122.8 when ELFCOM inop.

122.8 when ELFCOM inop.

RLS  
(Reindeer  
Landing System)

Final  
Aptch Crs  
**360°T**

Minimum Alt  
**CLAUS**  
**2500'** (2450')

RLS  
DA(H)  
(CONDITIONAL)  
**250'** (200')

Apt Elev **50'**  
Rwy 18 **50'**

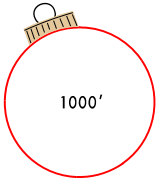
**MISSED APCH:** Climb to 2500' direct MSLTO, then RIGHT turn direct KSSNG and hold.

Alt Set: INCHES Trans level: FL 180 Trans alt: 18000'

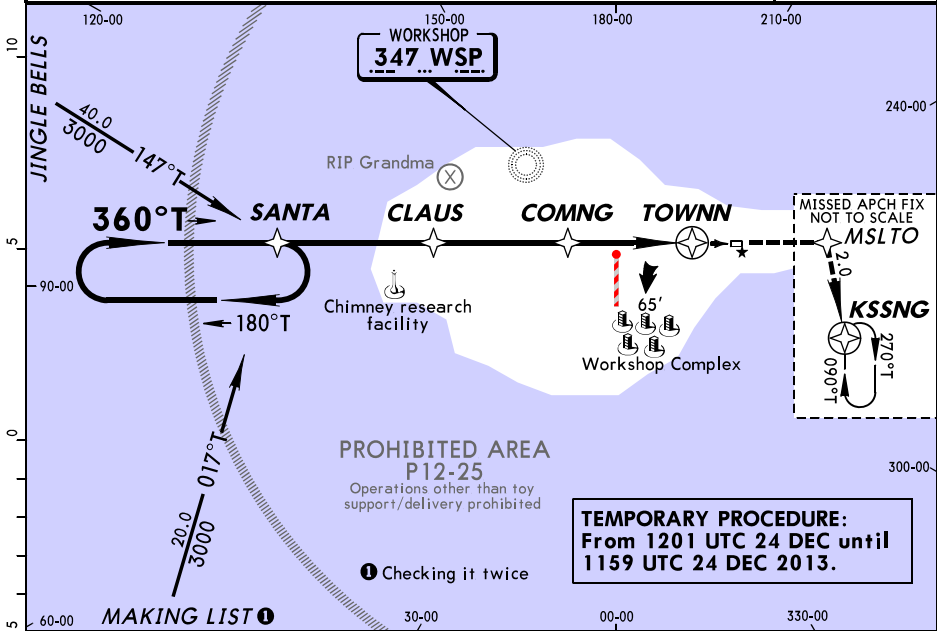
**CAUTION: Departures may be illuminated by blinding red nose.**

**CAUTION: Supersonic heavy departures; non-sleigh traffic discouraged.**

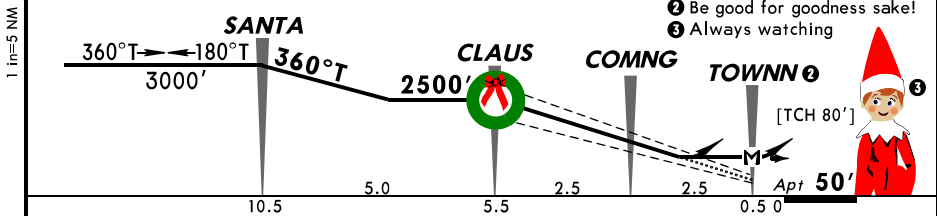
1. Reindeer practice flights near-round. 2. Flights in the vicinity may be conducted under the influence of egg nog. 3. No unapproved winter operations. 4. Postal flights with letters to Santa receive priority sequencing. 5. Reindeer and Elves on and in vicinity of runway. 6. Runway does not maintain stationary location.



MSA WSP NDB



**TEMPORARY PROCEDURE:**  
From 1201 UTC 24 DEC until  
1159 UTC 24 DEC 2013.



- ② Be good for goodness sake!
- ③ Always watching



Speed (Reindeer operating)	4	5	6	7	8	9	SALS TINSEL TWINKLE	2500'	D	MSLTO
Glide Path Angle	[7.0°]	N/A	N/A	800	998	1140				
MAP at TOWNN										

① If Dasher sick, reduce speed by 2 reindeer

MERRY OPS	STRAIGHT-IN LANDING RWY 18						LOC		CIRCLE-TO-LAND		
	RLS DA(H) 250' (200')		LOC (Rudolph Out) DA(H) 400' (350')			2 or more reindeer inop MDA(H) 500' (450')		Authorized only when Rudolph available			
	FULL	TINSEL out TWINKLE out	TINSEL out	TINSEL/ TWINKLE out	TINSEL/ TWINKLE out	TINSEL out	TINSEL/ TWINKLE out	Rdr in Svc	MDA(H)		
6								6	750' (700') - 2		
7	RVR 0	RVR 40 or 3/4	RVR 50 or 1	RVR 40 or 3/4	RVR 50 or 1	RVR 60 or 1 1/4	1	1 1/4	2	7	650' (600') - 1 1/2
8										8	550' (500') - 1
9										9	450' (400') - 1

CHANGES: Noel procedure.

© JEPPESEN, 2013. ALL RIGHTS RESERVED.

## Naughty/Nice List Last Minute Changes

*It's never too late!*

<i>NICE</i>	Code	<i>NAUGHTY</i>	Code

*Nice behavior change codes:*

- 01 - Cleaning up room on own
- 02 - Helping parents
- 03 - Walking old lady across street
- 04 - Giving something to someone in need
- 05 - Cooperating with parents

- 06 - Cooperating with brothers/sisters
- 07 - Helping with pets
- 08 - Helping in kitchen/with meals
- 09 - Being nice
- 10 - Other

*Naughty behavior change codes:*

- 11 - Not listening to parents
- 12 - Peeking at/snooping for gifts
- 13 - Mean to brother/sister
- 14 - Not following rules
- 15 - Misbehavior in school
- 16 - Taking things that don't belong to him/her

- 17 - Getting into or stealing others belongings
- 18 - Vandalism/throwing rocks
- 19 - Being a hellion
- 20 - Talking to strangers
- 21 - Telling lies
- 22 - Other



**NTPL/POL**  
Apt Elev **50'**  
N 90.0 W 0.0

**JEPPESEN**

25 DEC 13  
**24 Dec 12017** (12-25)

**NORTH POLE VILLAGE**  
**SANTA'S WORKSHOP INTL**

WORKSHOP Traffic

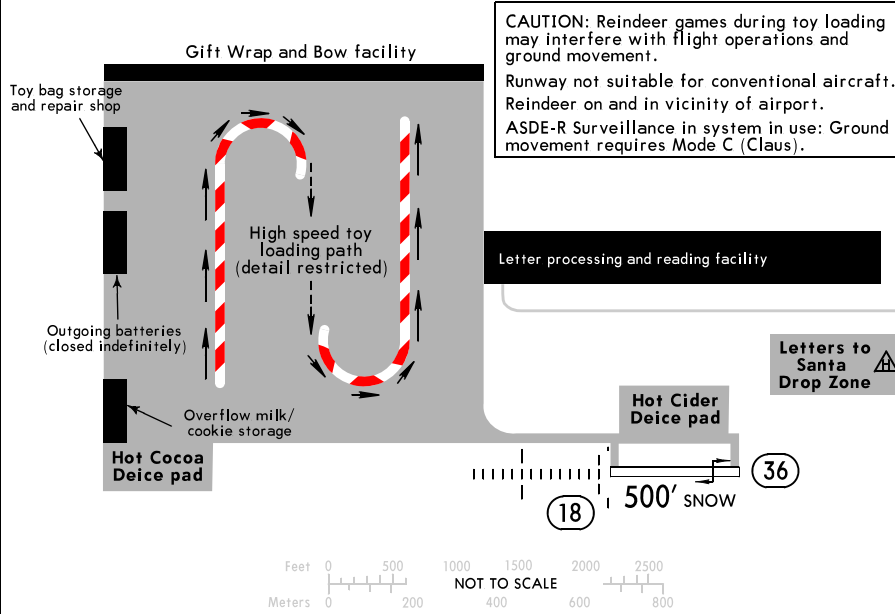
NORTH POLE Approach

ARCTIC Center

122.8 when ELFCOM inop.

122.8 when ELFCOM inop.

122.8



**ADDITIONAL RUNWAY INFORMATION**

RWY	RL ① TINSEL ② TWINKLE SALS Reindeer vis Range (RVR)	USABLE LENGTHS		TAKE-OFF	WIDTH
		Threshold	Glide Slope		
09 ① 27	RL	500'	450' 500'	500'	100' 33m

- ① Only hoof brakes permitted on runway.
- ② Illuminated Dec 1 - Dec 31 annually.  
Decorated trees at both ends of Rwy may be mistaken for Rwy lighting.

TAKE-OFF		FOR FILING AS ALTERNATE	
Rwy 18		RNAV (GPS) Rwy 18   Other	
Adequate Red Nose Illum.	Under-the-weather Nose Illum.		
RVR 0	RVR 12	800-2	NA
	RVR 7		

'Twas the night before Christmas and all 'round the field  
 Santa's helpers were carrying all they could wield  
 'Twas time to pitch in and load up the sleigh  
 With every possible gift for work and for play  
 "All hands to your stations" Santa did say  
 "For it's almost time for the biggest of days"  
 The day of the year and the fruit of our work  
 Is almost upon us, so there's no time for a quirk  
 The manifest lists the destination of each toy  
 The fastest of sleds bound for each girl and boy  
 As the takeoff begins, the sleigh starts to scream  
 To deliver the toys as the children do dream  
 Back at the pole, a big collective sigh  
 The hard work is over, save for the big guy  
 He's good at it though, it's not his first jaunt  
 Bringing the toys you told him you want



## Letter and Wish List to Santa Claus

This year I have been:

Naughty

Nice

Dear Santa Claus,

---

---

---

---

---

---

---

---

---

---

---

---

Thank you,

---

## Christmas List

---

---

---

---

---

---

---

---

---

---

---

---

---

---

---

---

---

---

---

---

---

---

For Workshop use only:

Received on: \_\_\_\_\_

Orders sent to elves: \_\_\_\_\_

Naughty/nice checked by: \_\_\_\_\_